



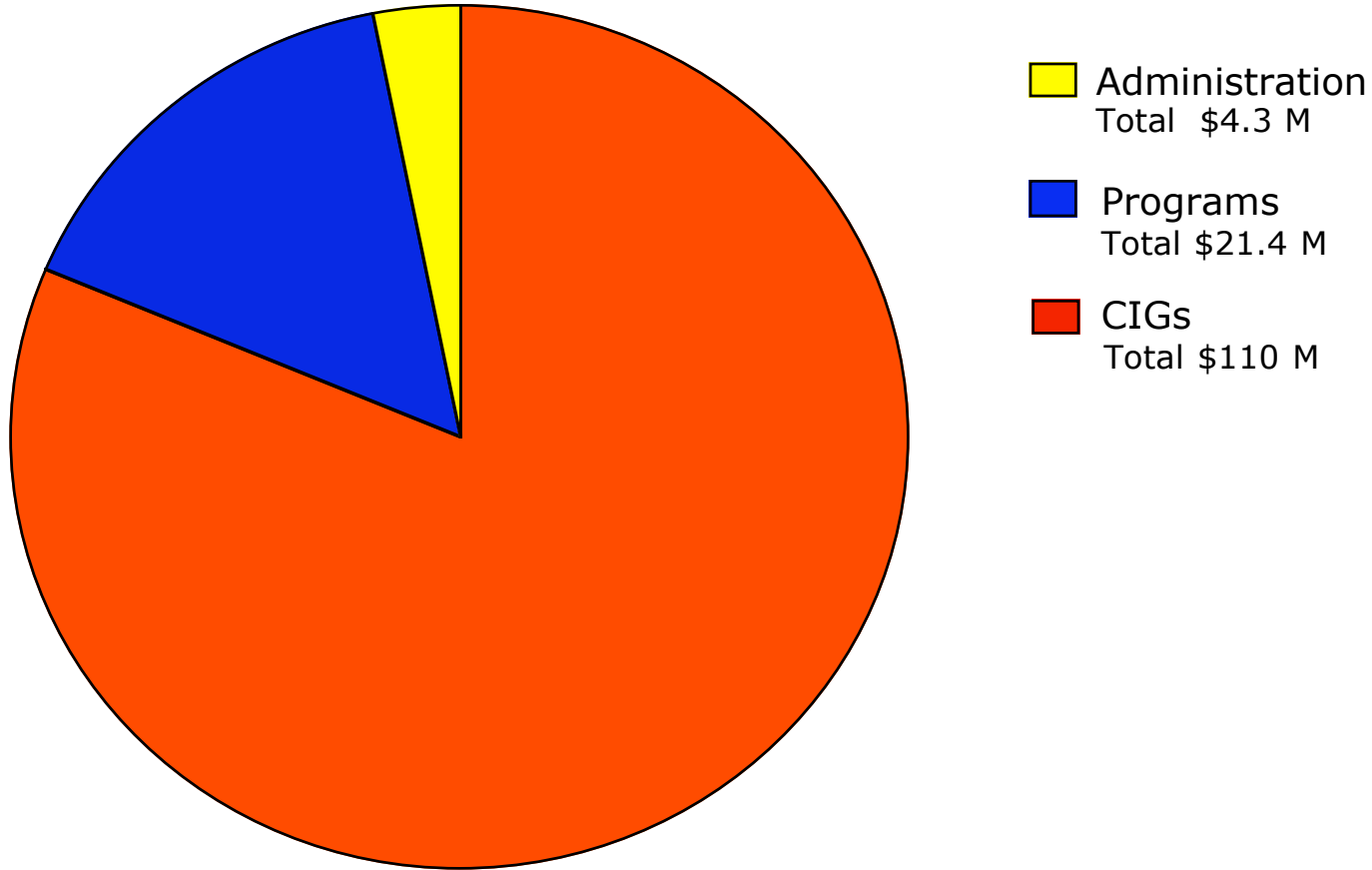
ROAD MAP TO NEW YORK CITY'S DEPARTMENT OF CULTURAL AFFAIRS

- **Funding allocations 2006**
- **Cultural Institutions Group (CIGs) funding 2006**
- **Program Category by Funding Areas 2005**
 - Program Lines baseline funding 1990 and 2005 by borough**
 - Program average grant by borough 1990 and 2005**
- **Attachments**
 - Historical data CIGs**
 - List of all 2005 Program Designated Lines by Borough**

*New York City Arts Coalition
351-A West 54 St.
New York, NY 10019
(tel) 212-246-3788
(fax) 212-246-3366
March 2006*

**Funding at the Dept. of Cultural Affairs (DCA) is divided into two categories,
plus administrative costs.**

- 1. Cultural Institutions Groups (CIGs) -- 34 groups in city owned buildings**
- 2. Program Groups -- all other groups**



Cultural Institutions Groups (CIGs)

Bronx Historical Society
 Bronx Museum
 NY Botanical Garden
 Bronx Zoo (Wildlife Conservation)
 Wave Hill

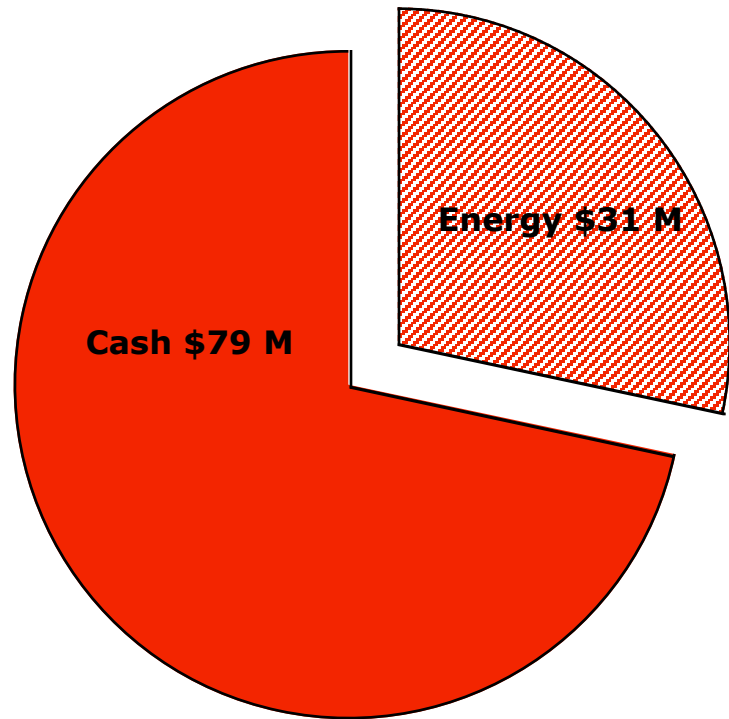
BAM
 Brooklyn Botanical Gardens
 Brooklyn Children’s Museum
 Brooklyn Museum
 New York Aquarium (Wildlife Conservation)

American Museum of Natural History
 Carnegie Hall
 City Center for Dance and Drama
 Metropolitan Museum
 El Museo del Barrio
 Museum of Jewish Heritage*
 Museum of the City of New York
 New York Shakespeare Festival
 New York State Theatre
 Studio Museum in Harlem

American Museum Moving Image
 Flushing Council on the Arts/Town Hall*
 PS 1/Contemporary Arts Center
 Queens Museum of Art
 Jamaica Arts Center
 New York Hall of Science
 Queens Botanical Garden
 Queens Theatre in the Park

S.I. Botanical Garden
 S.I. Children’s Museum
 S.I. Historical Society
 S.I. Institute for Arts & Sciences
 S.I. Zoo
 Snug Harbor

CIG Allocation 2006



CIGs receive cash for operating expenses and an energy allocation, which is included in their allocation, but is never cash to them. City pays energy costs directly to NYS Power Authority.

*Only two groups, Museum of Jewish Heritage and Flushing Council on the Arts/Town Hall, have become CIGs since 1990.

PROGRAM CATEGORY 181 lines FY05

This category has several sub-sets of funding:

168 Program Lines designated for specific groups.

- Queens 23 groups \$1.3 M
- S.I. 8 groups \$501,000
- Bronx 14 groups \$1.4 M
- Brooklyn 21 groups \$1.5 M
- Manhattan 102 groups \$6.7 M

5 Borough ADF (re-grant funds) to each borough arts council.

\$327,600

1 Cultural Development Fund (CDF).

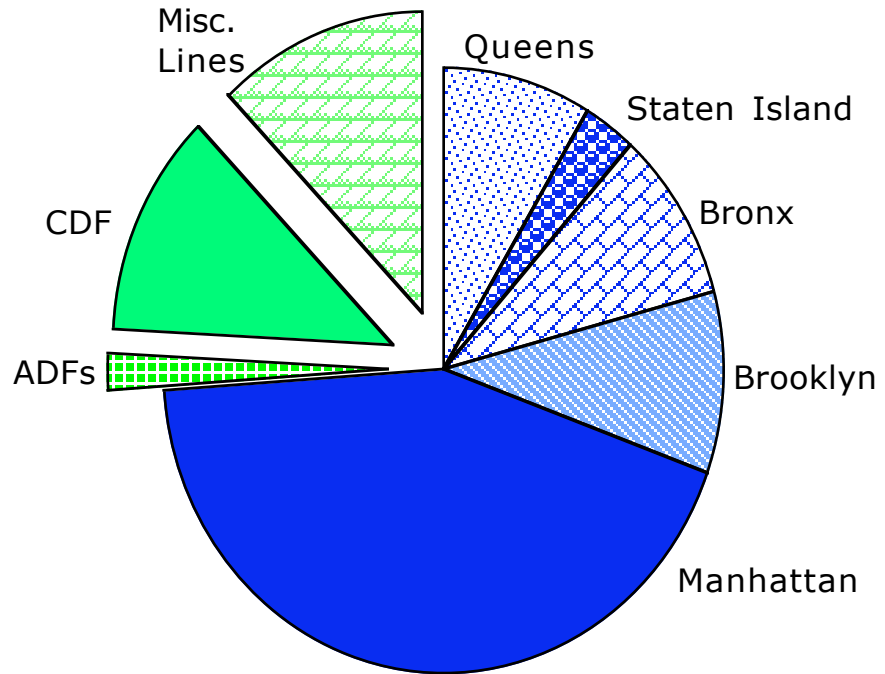
\$1.8 M

- groups not already designated as a Line in the budget
- may receive both CDF money and a Council allocation

7 Misc. lines \$1.9 M

- City Council allocations for groups without a designated Program Line
- Community Development funds
- technical budget adjustments

PROGRAM CATEGORY BY FUNDING AREAS



TOTAL FUNDING FOR THE 168 LINES IS \$14.2 MILLION, OF WHICH \$2.8 MILLION IS DUE TO COUNCIL ADDS TO THE DESIGNATED LINES. OTHER COUNCIL ADDS ARE IN THE MISC. LINES CATEGORY ABOVE.

NOTE: This is 2005 data.
2006 details not yet available.

DETAILS of PROGRAM LINES

Program Lines are established only by the Mayor:

- 1990 = 187 lines
- 2005 = 168 lines

New Lines 1990 forward:

- 19 Dinkins administration
- 10 Guiliani administration

Queens decrease results from:

- loss of one large line
- one group becoming a CIG

Manhattan increase from:

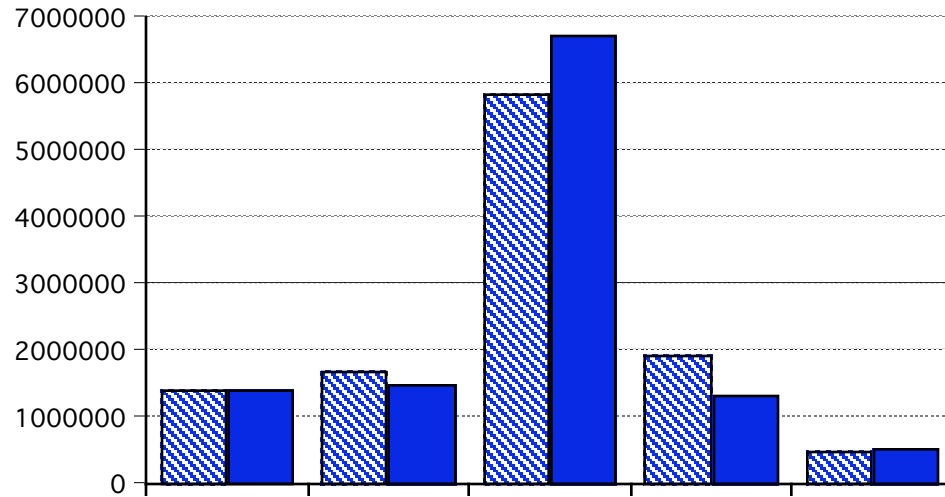
- 3 new lines from Guiliani
- transfer of \$500,000 from Dept. of Aging

Staten Island increase from:

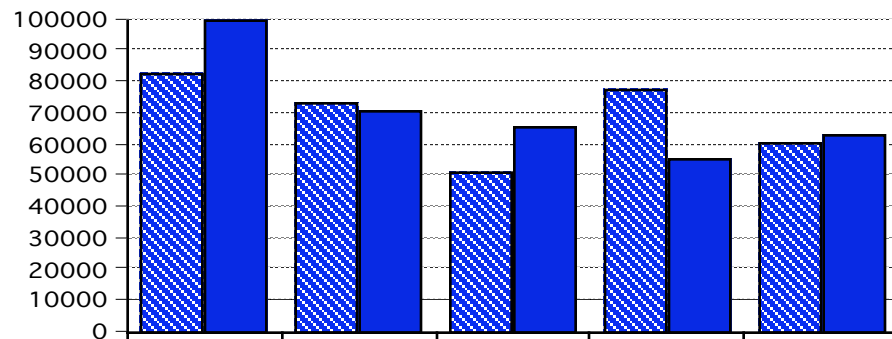
- 1 new line from Guiliani

Brooklyn decrease just part of overall decrease.

Program Baseline Funding 1990 and 2005 by Boro



Average Grant 1990 and 2005 by Boro



Average Grant by Borough for Program Lines varies greatly.

2005 numbers

- BX \$99,407
- BK \$72,288
- Man \$65,708
- Qns \$55,239
- SI \$62,625

NOTE: This is 2005 data. 2006 details not yet available.